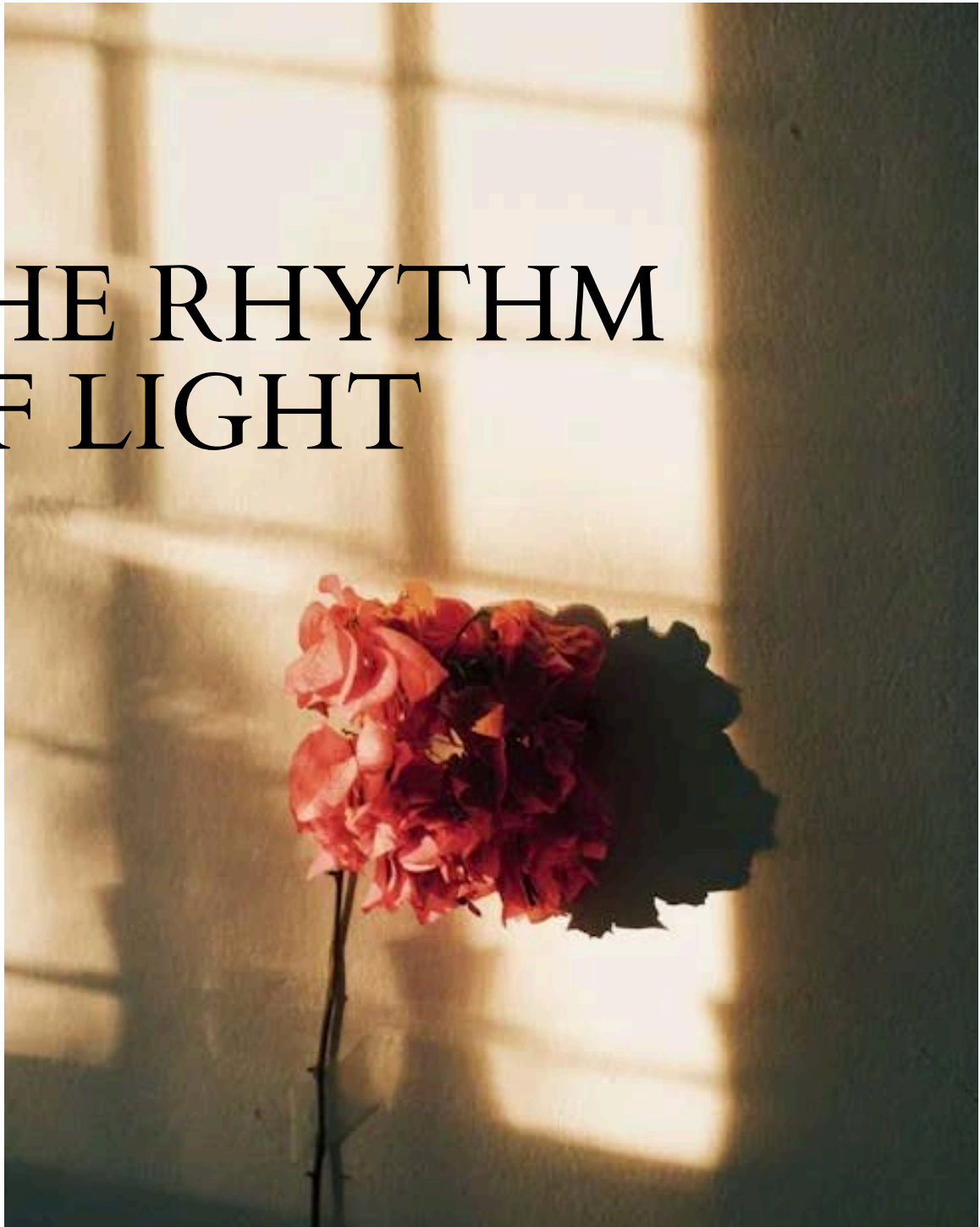


# THE RHYTHM OF LIGHT



K ◻ H R ◻  
ITALY

K O H R O  
ITALY



NEW KOHRO  
COLLECTION



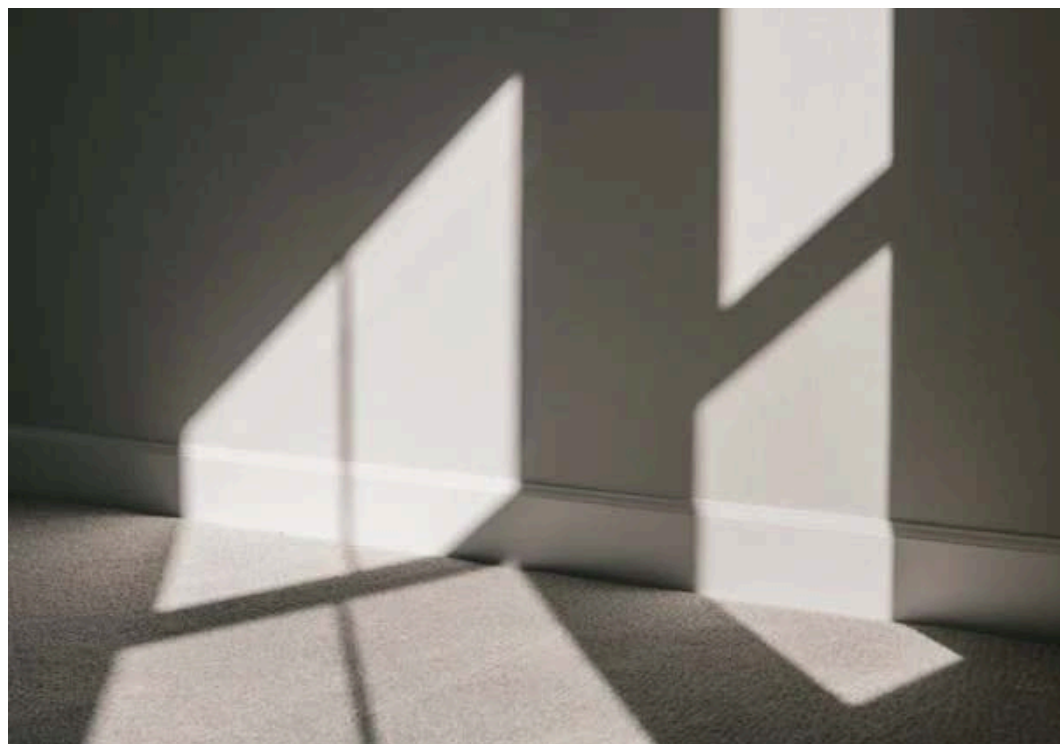
WE BRING

THE RHYTHM  
OF LIGHT

INSIDE YOUR HOME







# THE RHYTHM OF LIGHT

---

NEW KOHRO COLLECTION

Perceiving the infinitely minute, mobile and light.

The new KOHRO fabric collection takes inspiration from the signs that nature writes on planet Earth using air, wind, water, but above all movement of the light. The fabrics in this collection demonstrate a special sensitivity for shapes and brightness with an elegant play of contrasts between solids and voids, light and dark. To bring the rhythm of light also into the rooms of the house.

Cotton, linen and wool are skifully used with touches of chenille which donate brightness. So refractive effects emerge in the drawings and images and in refined two-tone colors of the CONSTELLATION fabric, but also in the shiny yarn base of MOAB, in the flamed texture of MANTUA. Pick the twist of stable and moving natural forms, the rhythm of light that enhances them.

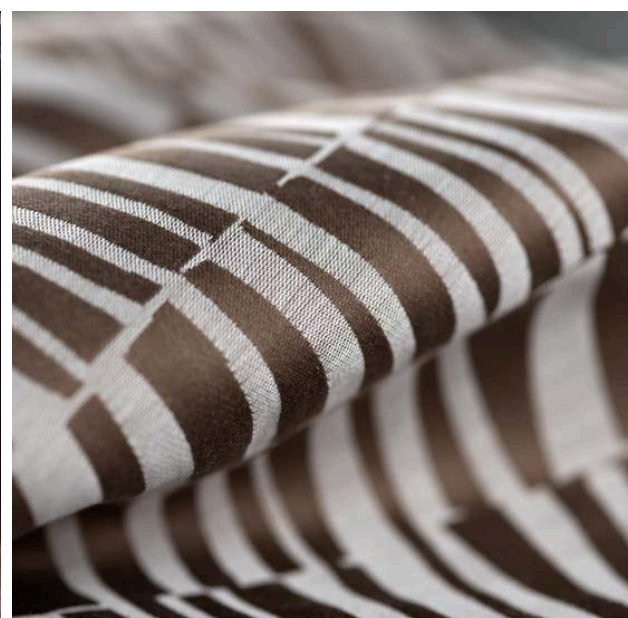
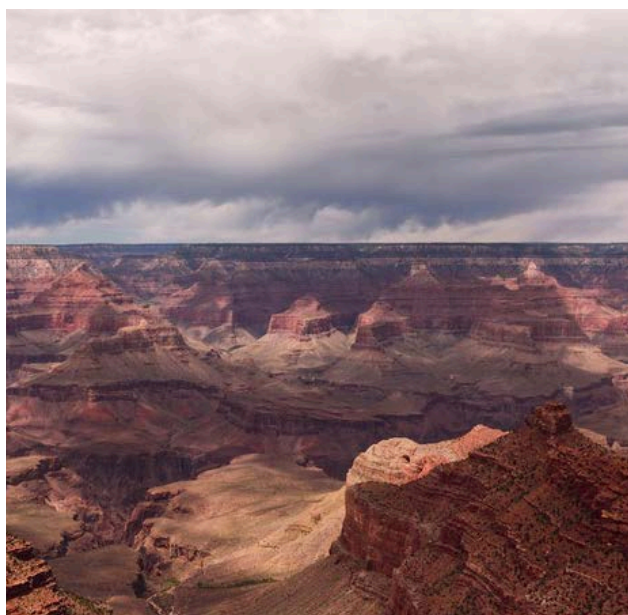
Here then are the folds of the bark interpreted in ARPEGE with natural palettes more or less contrasting, the rocky splinters of WADI RUM available in twelve color variations, the streaks of the dunes that animate PHOEBE and ORYX, but also the very light PEPLO. The colors of light dismantled white can be found in the robust and relief structures of TORCELLO and DEBENHAM.

And again, the light vibrates on the gather surface with the transparent ARRICCIO, shines through the different yarns of the armor in TABRIS, slides in ELIWEN on the vast backgrounds shaded between flowers dream.

THE RHYTHM OF LIGHT collection offers fabrics suitable for transparencies, stuffed items, weights suitable for decorative accessories and duvet covers, all equipped of lightness arises from the sensitivity to the drawings of light and shadows.



W A D I  
R U M

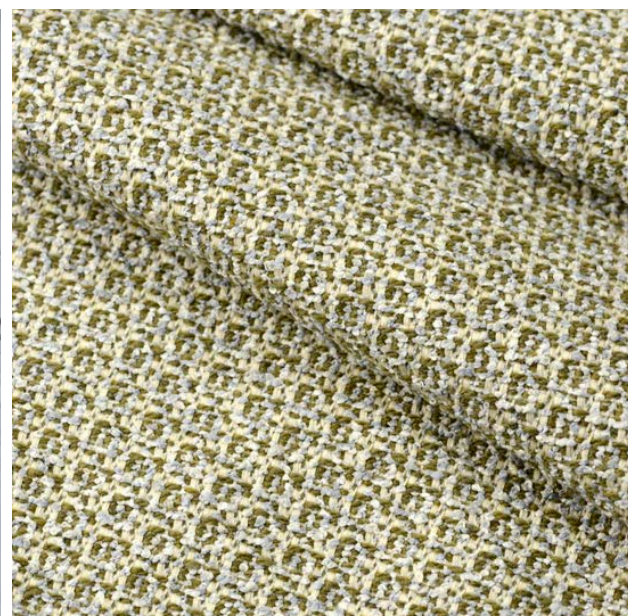








# TORCELLO









# TABRIS

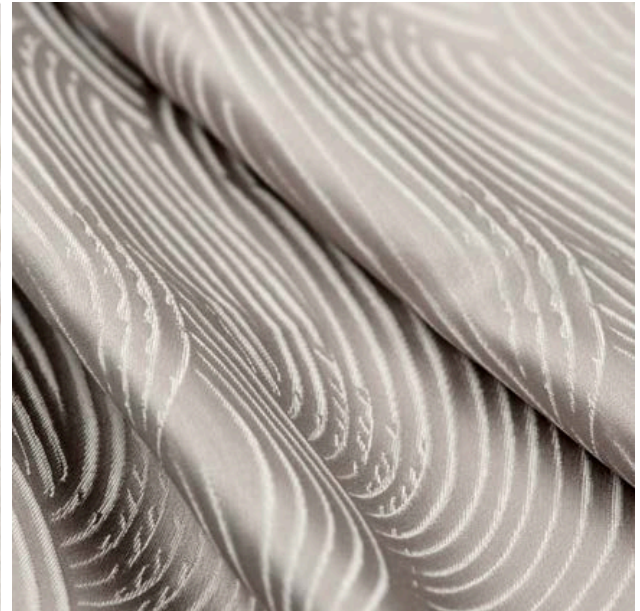








# PHOEBE

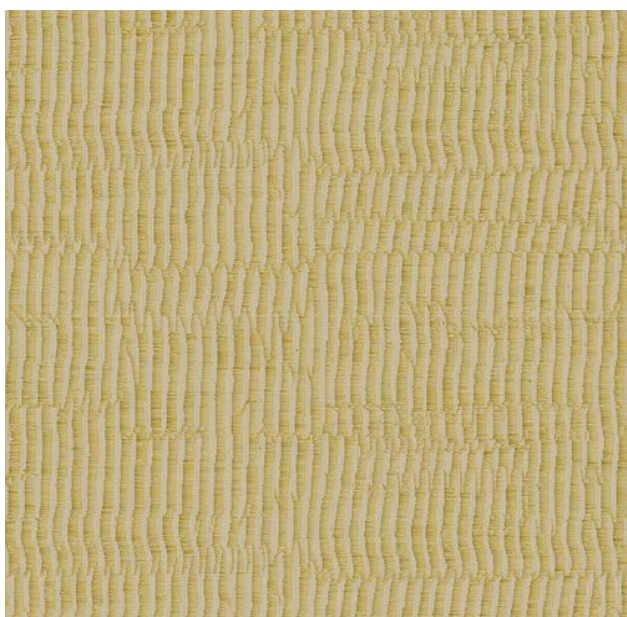
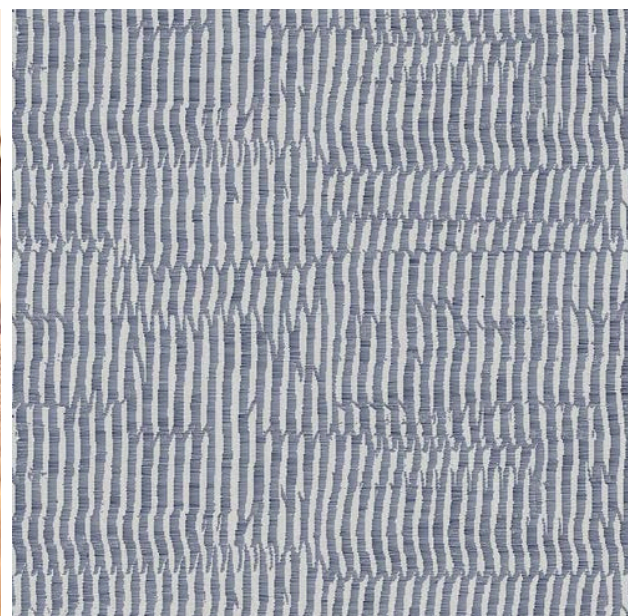
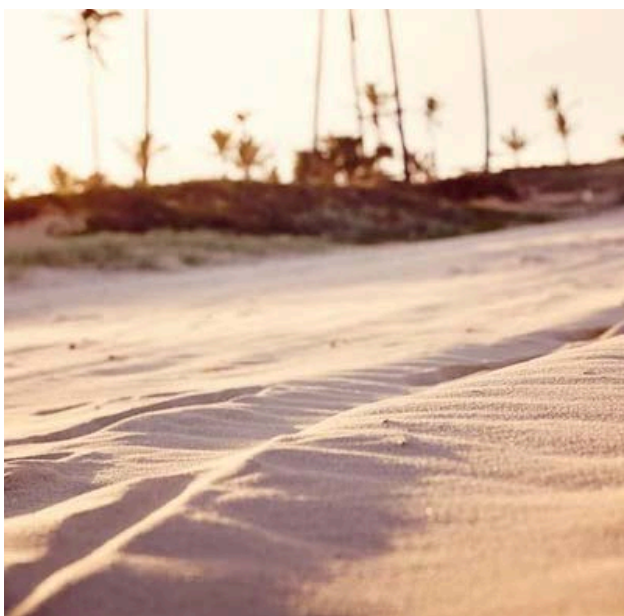
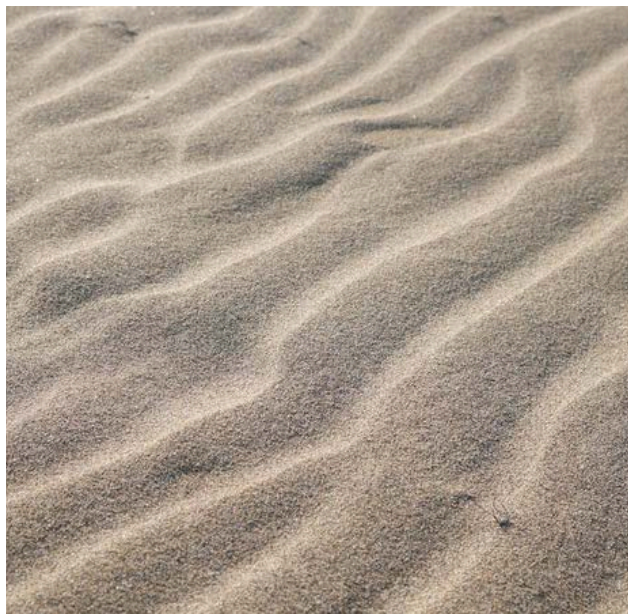




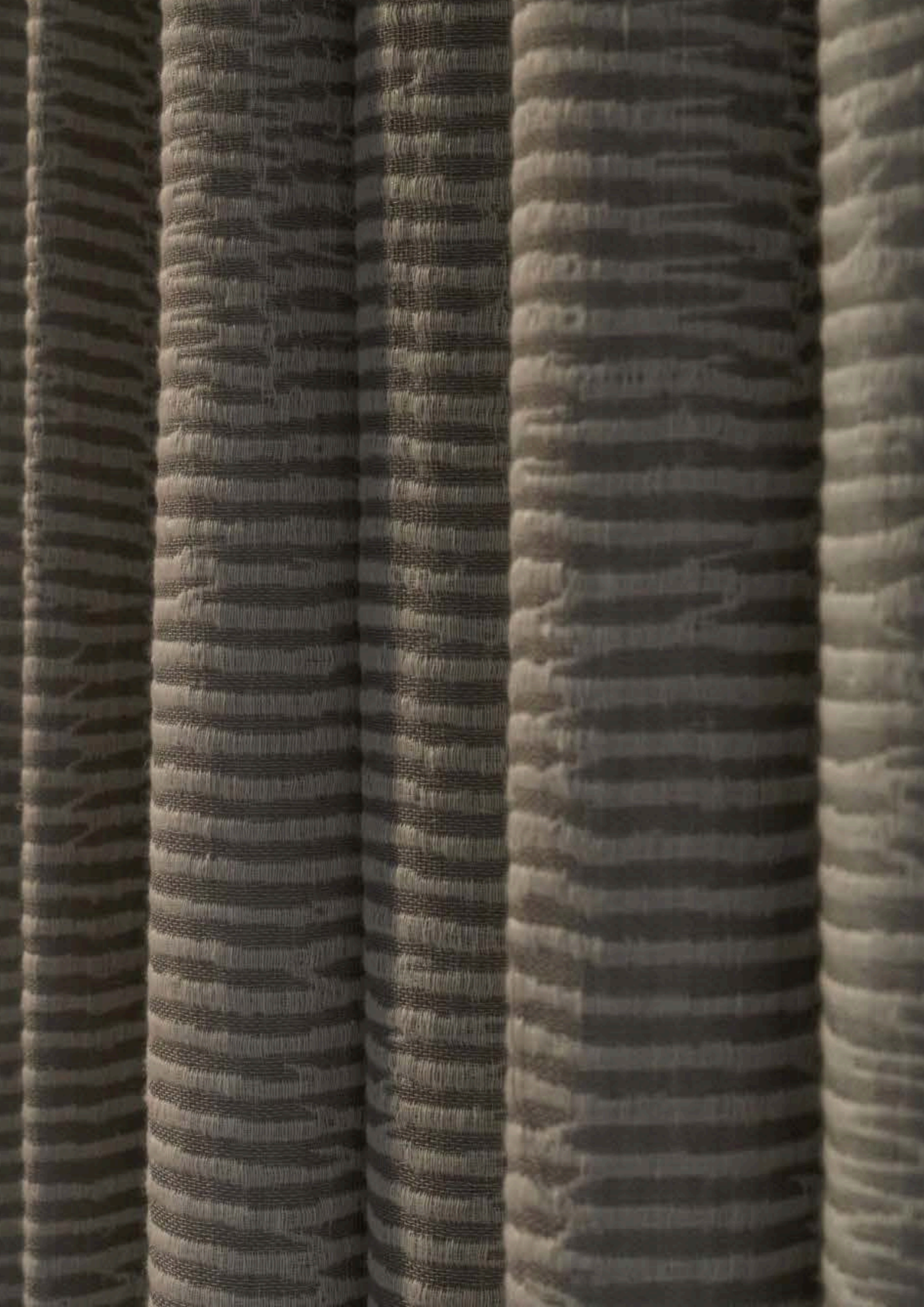




# ORYX

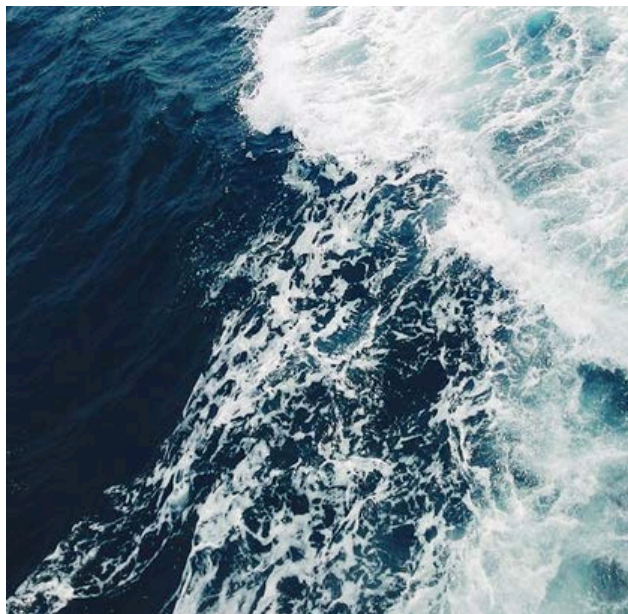








# MOAB

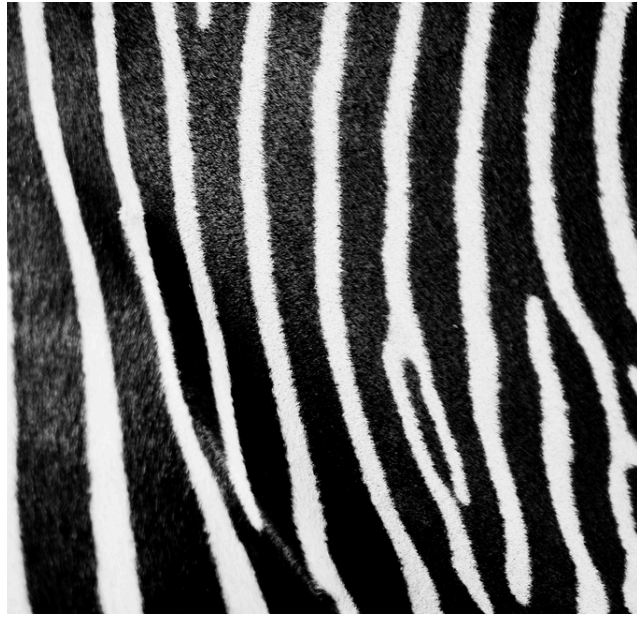








# MANTUA









# HAMBOR

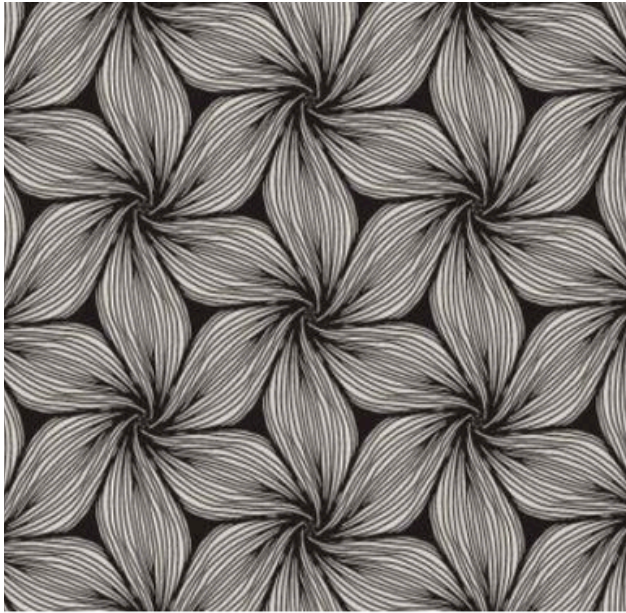








# ELIWEN

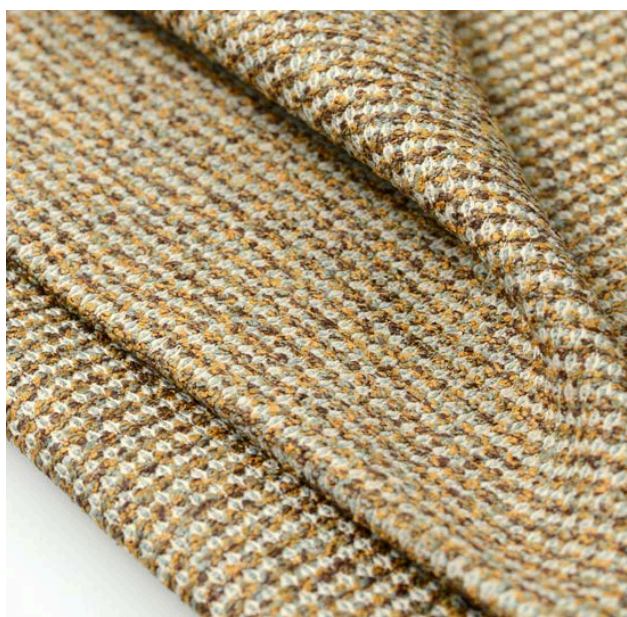
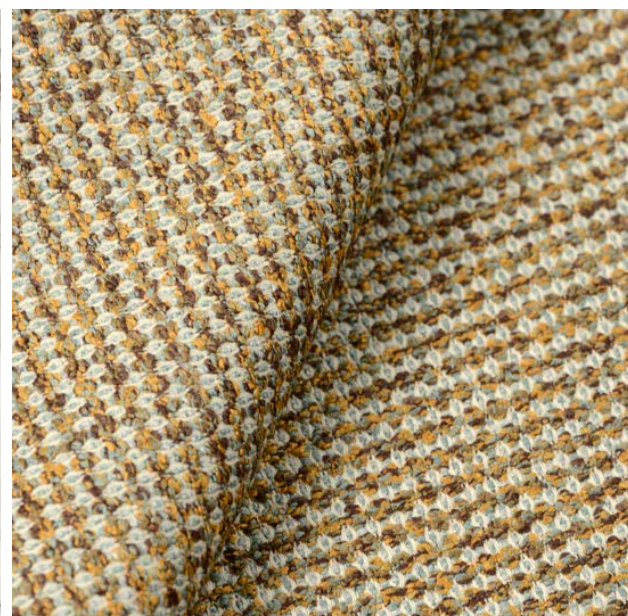
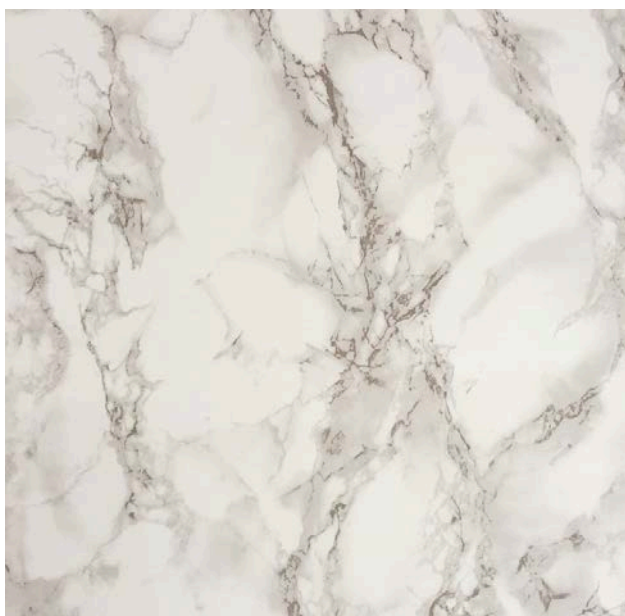
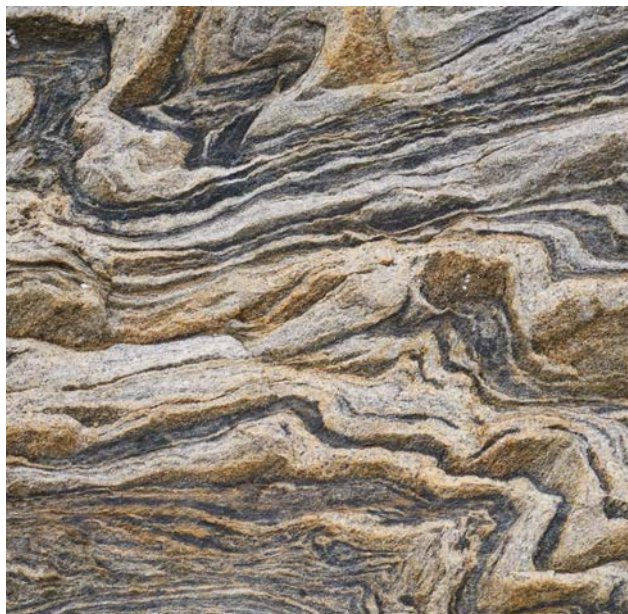








# DEBENHAM

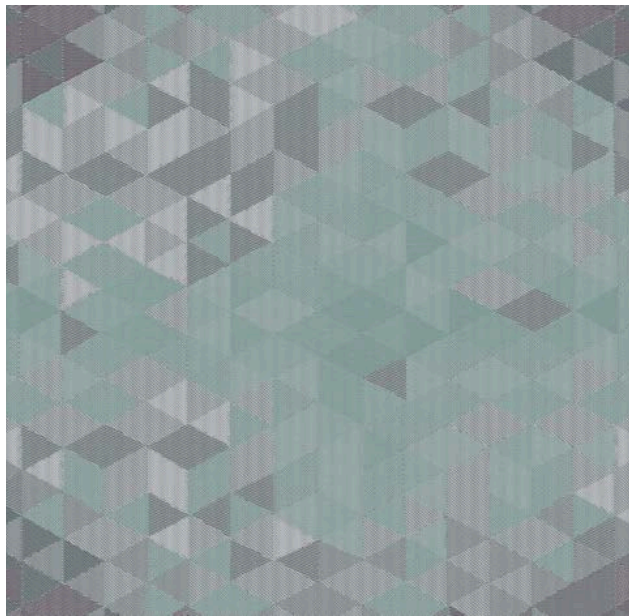








CONSTELLATION

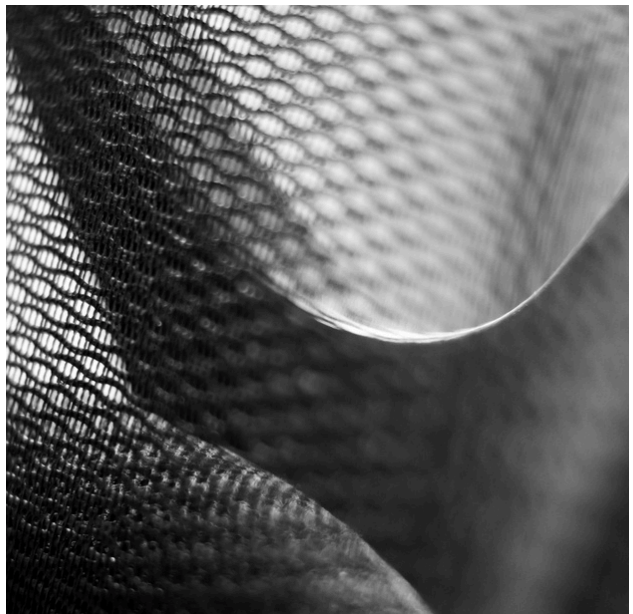
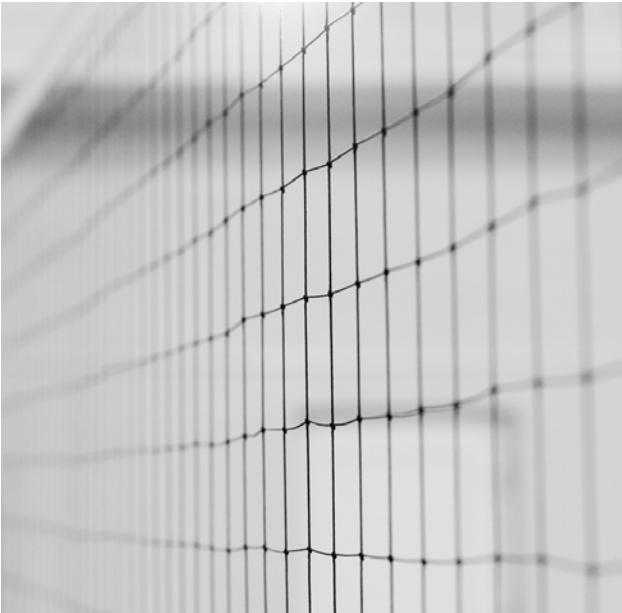
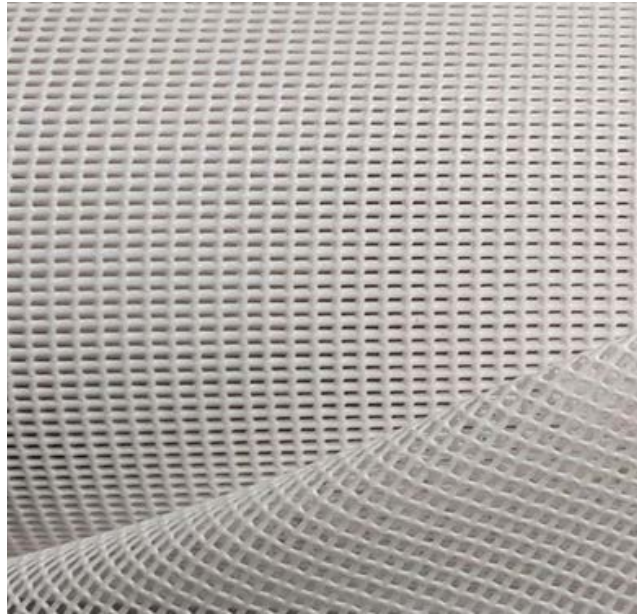








# ARRICCIO

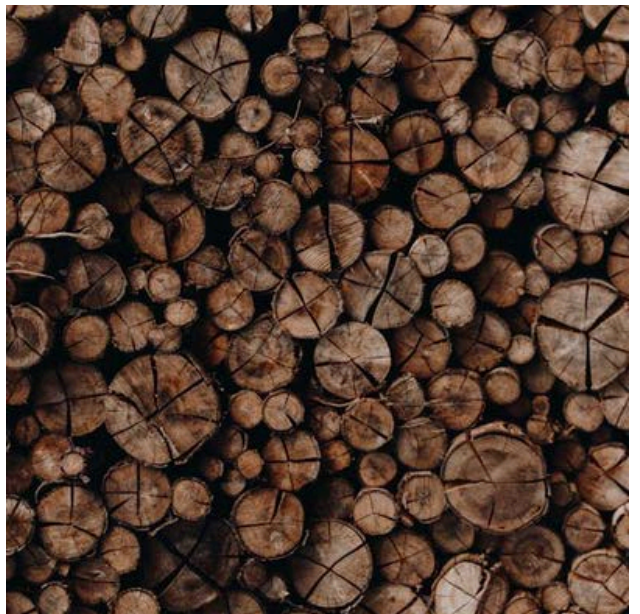
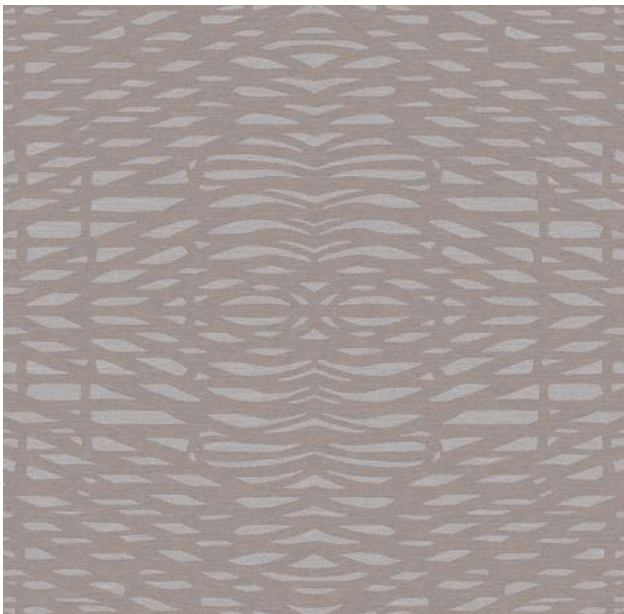
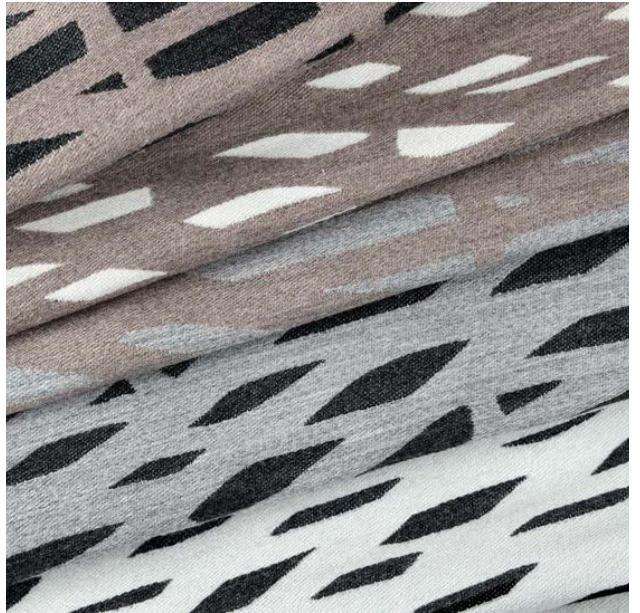








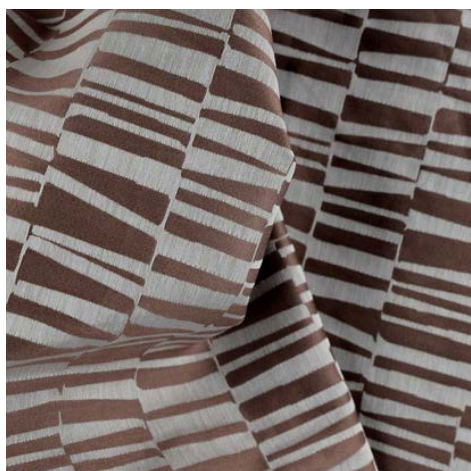
# ARPEGE











## WADI RUM pag. 7 - 8

COMPOSITION: cotton

FEATURES: contrasts of light and shadow

INSPIRATION: desert rocks

USE: table, bed, curtains, accessories



## TORCELLO pag. 9 - 10

COMPOSITION: wool and cashmere

FEATURES: play of colors

INSPIRATION: thridimensional surface

USE: bed, upholstery, accessories



## TABRIS pag. 11 - 12

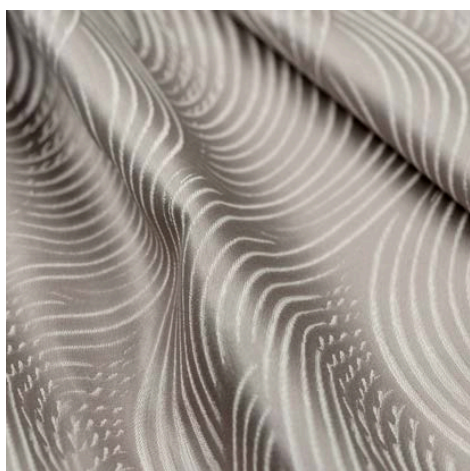
COMPOSITION: cotton

FEATURES: colors that intertwine

INSPIRATION: starry sky

USE: upholstery, wallcovering, curtains





## **PHOEBE pag.13-14**

**COMPOSITION:** cotton

**FEATURES:** soft lines effect

**INSPIRATION:** wind on sand

**USE:** upholstery, bed, table, curtains



## **ORYX pag.15-16**

**COMPOSITION:** linen and cotton

**FEATURES:** chiaroscuro effect

**INSPIRATION:** sand dunes

**USE:** accessories, bed, curtains



## **MOAB pag.17-18**

**COMPOSITION:** cotton and chenille

**FEATURES:** strong softness

**INSPIRATION:** sunkissed sea waves

**USE:** upholstery, bed, accessories





## **MANTUA pag.19-20**

COMPOSITION: cotton

FEATURES: resistant softness

INSPIRATION: zebra-striped look

USE: upholstery, bed, accessories



## **HAMBOR pag.21-22**

COMPOSITION: cotton and linen

FEATURES: fascinating nature

INSPIRATION: sea urchins

USE: accessories, bed, upholstery, table



## **ELIWEN pag.23-24**

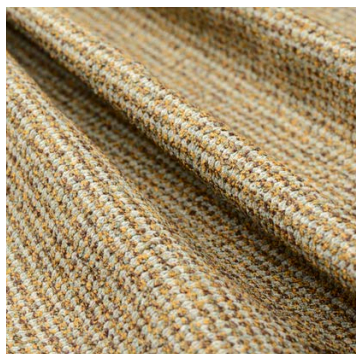
COMPOSITION: cotton

FEATURES: elegant blooming flora

INSPIRATION: flowery geometrical shapes

USE: accessories, bed, wallcovering





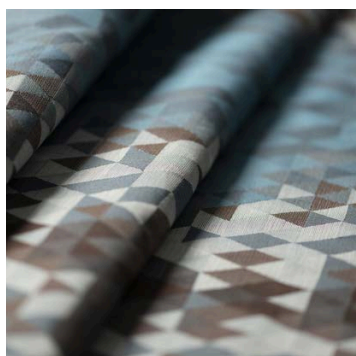
## **DEBENHAM pag.25-26**

COMPOSITION: cotton

FEATURES: solid elegance

INSPIRATION: granite

USE: accessories, bed, upholstery



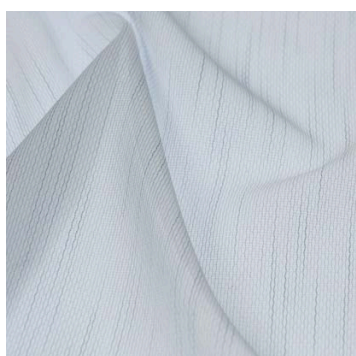
## **CONSTELLATION pag.27-28**

COMPOSITION: cotton

FEATURES: cards of different colors

INSPIRATION: the universe and its stars

USE: accessories, bed, table, curtain



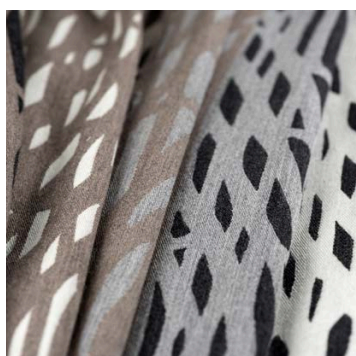
## **ARRICCIO pag.29-30**

COMPOSITION: cotton

FEATURES: transparency

INSPIRATION: light network

USE: accessories and curtains



## **ARPEGE pag.31-32**

COMPOSITION: wool and cashmere

FEATURES: contemporary design

INSPIRATION: the bark of trees

USE: accessories, wallcovering, bed, curtains



K O H R O  
ITALY

marketing@kohro.it  
phone: +39 035741845  
www.kohro.it



kohroitaly



kohroitaly