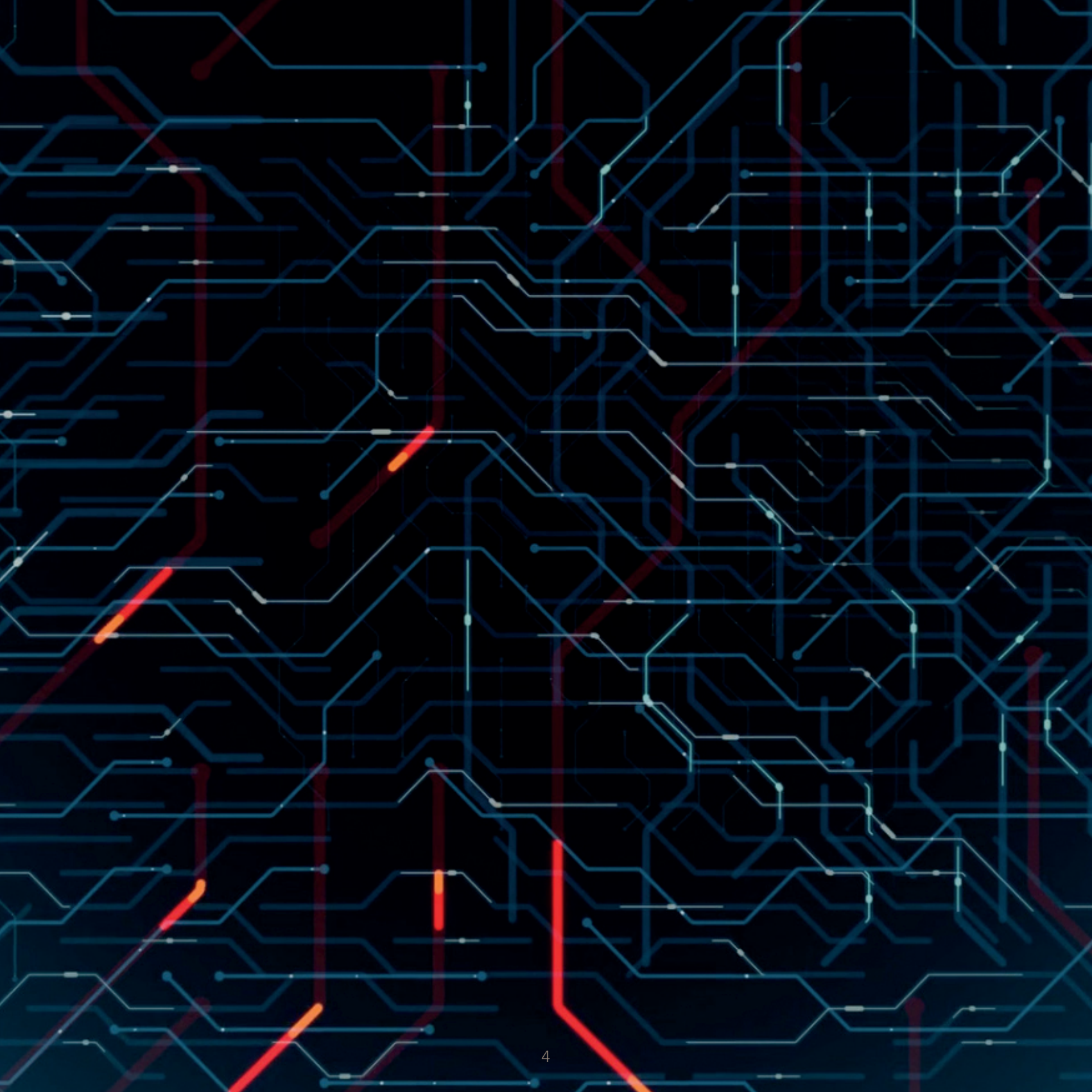




The
FOREST NETWORK

K ◻ H R ◻
ITALY

K  H R 
ITALY



The FOREST NETWORK

a balanced coexistence

This collection sets its eyes on the invisible that enlivens the forest.

Small and large spaces where the natural world's intelligence interacts, where different creatures work together to strike a vital balance.

Sensory connections and intertwined beings make up a complex, crowded but balanced social system, a community where every organism plays a precise role. KOHRO has carefully captured the patterns and marvelous color cues of this habitat, and detected the pulsating designs of this hidden intelligence relentlessly working to communicate and cooperate. A commendation for Nature's lively dynamism and what is essential to sustain life, which in nature coincides with an industrious and peaceful balance.

Fabrics in THE FOREST NETWORK collection have earthy tones dominating the scene and alternating with cold pink, emerald and turquoise accents, laced in contemporary patterns such as UMBRA, PANTANAL, and DENDRON.

Inspired by tree elements - foliage, roots, bark covered in moss and lichen - they take advantage of precious and clever textile contributions such as linen in DENDRON, or chenille in UMBRA. Structures are lighter in TETHYS with its linen transparencies, more robust and resistant in the wool construction of SEQUOIA, but they always offer an innovative visual impact, thanks to bright colors such as burnt sienna.

Patterns that trace lattices throbbing with vitality and capture reflections and hues, light, and 3D geometries are set in cottons for DEW, PHYLLLOS, and PINE LIGHT. Silk, on the other hand, illuminates FJORD - recalling rocks, currents and glaciers - or ignites ATHABASKA's precious lampas jacquard, reminiscent of ancient ritual forest bonfires.

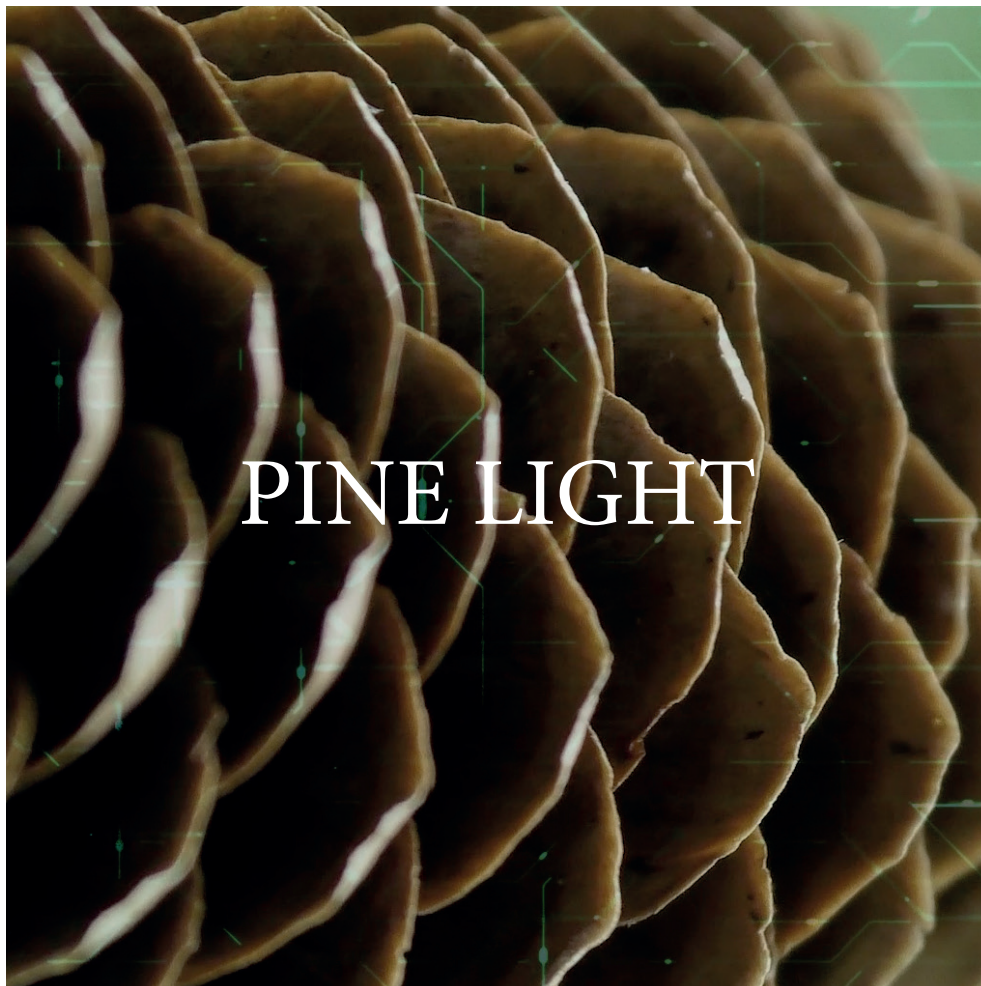
The collection draws from the energy and balance of the forest to offer a cross-section of shapes, nuances and application purposes, where decorative accessories, drapes, curtains, bedding and upholstered items find new inspirations.





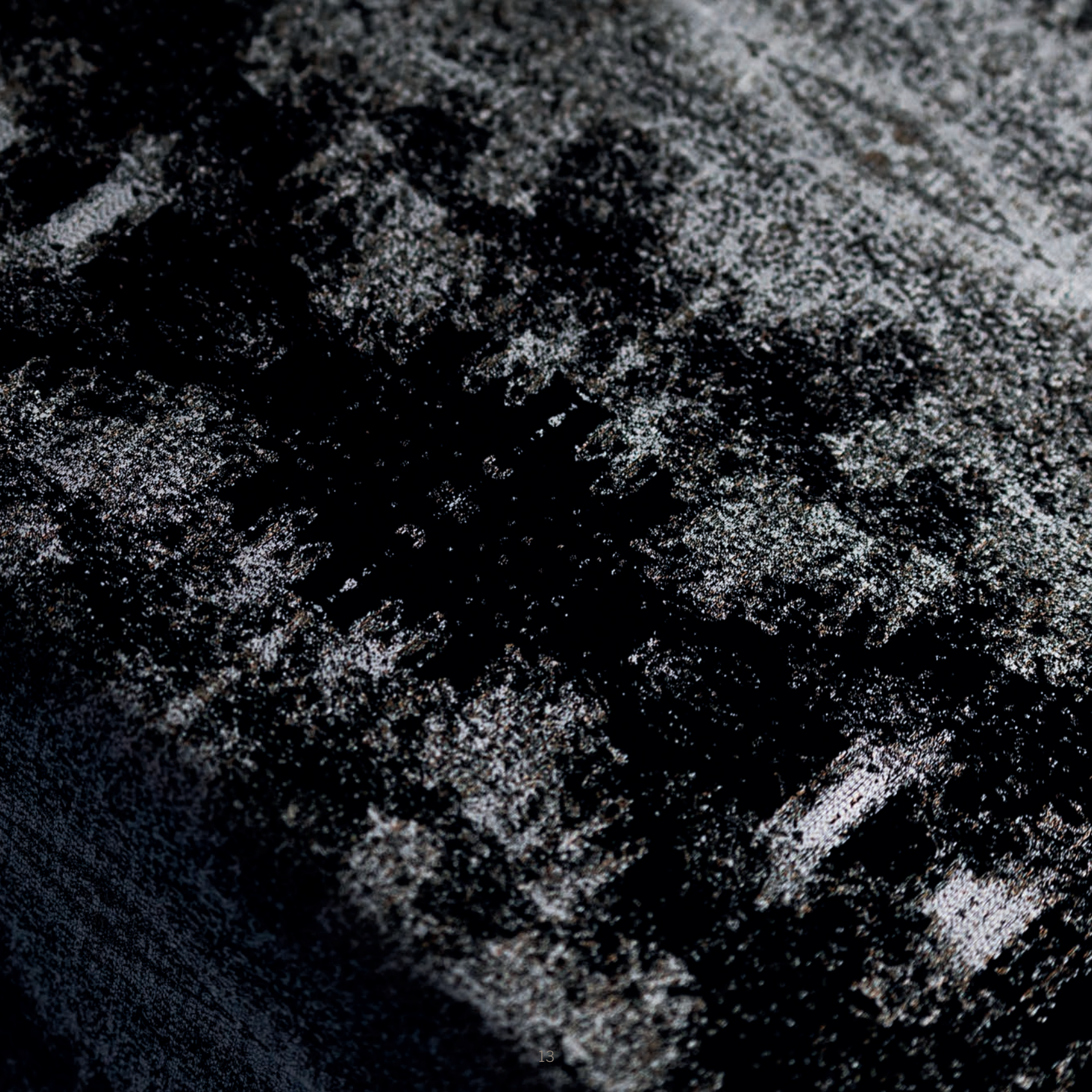


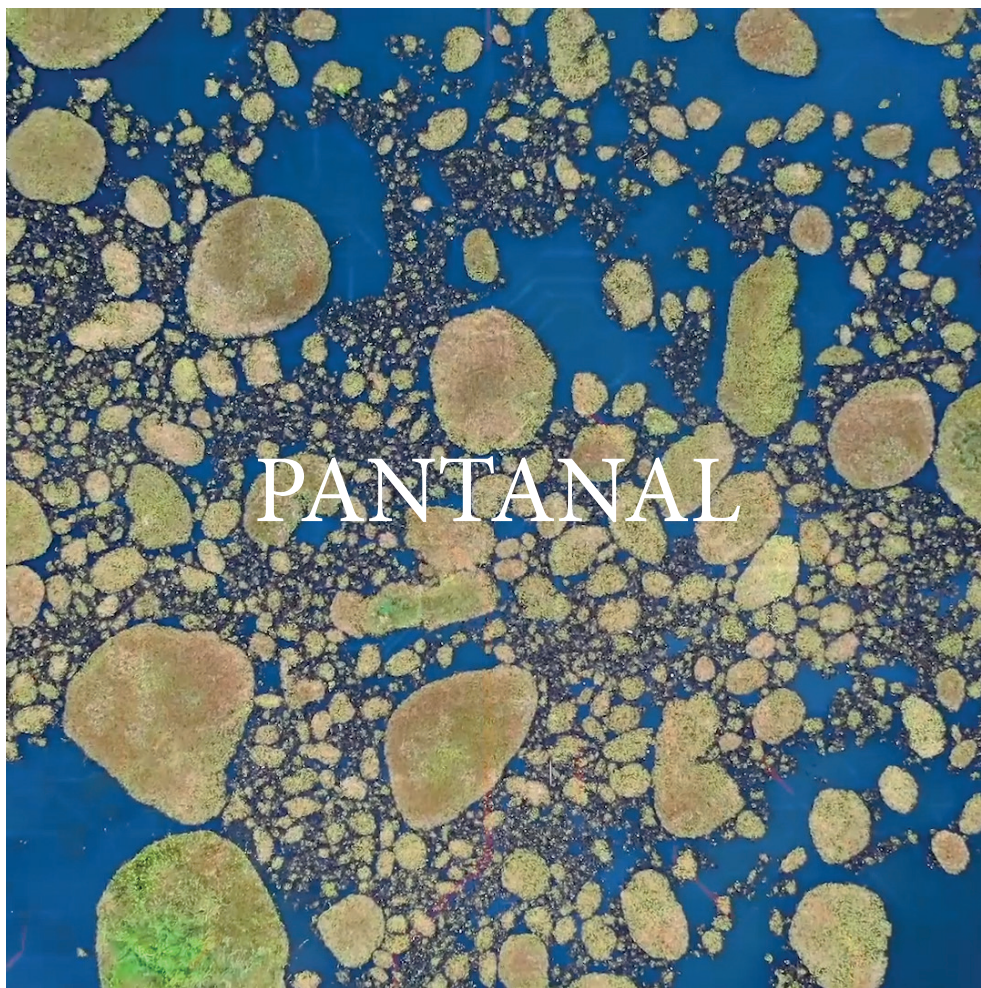




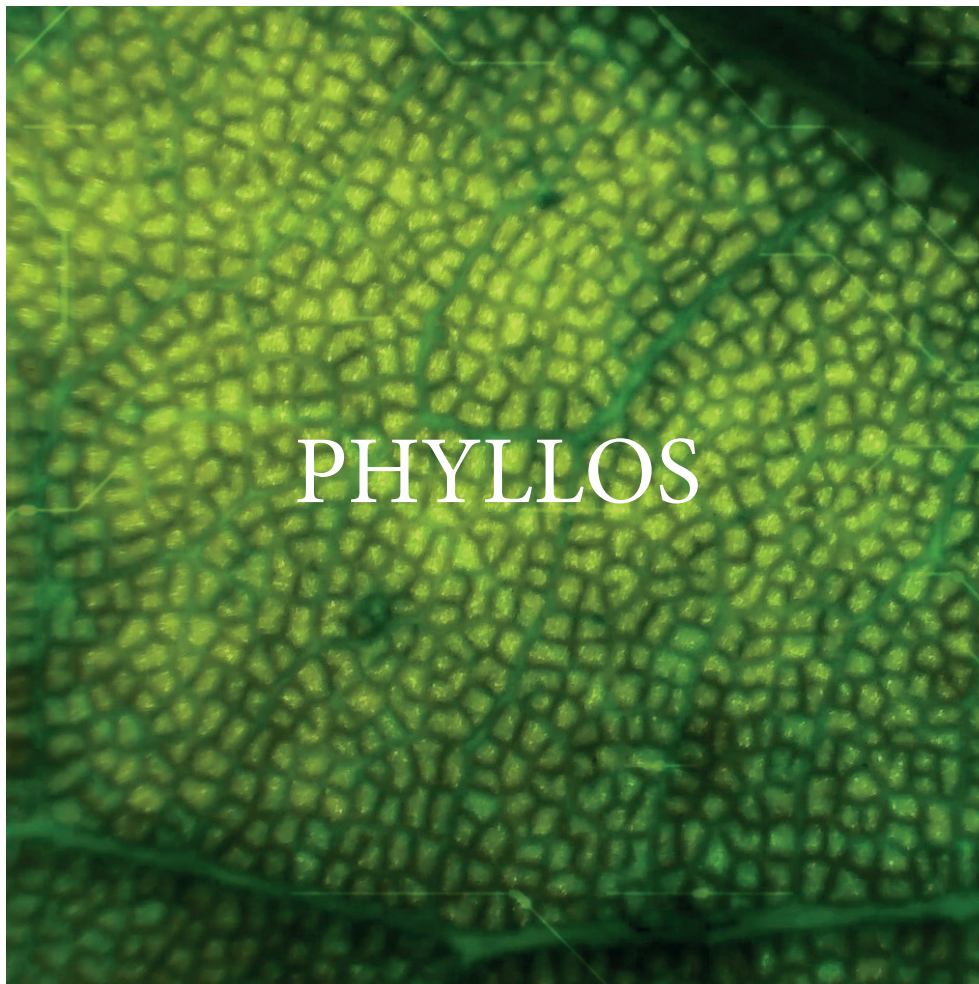


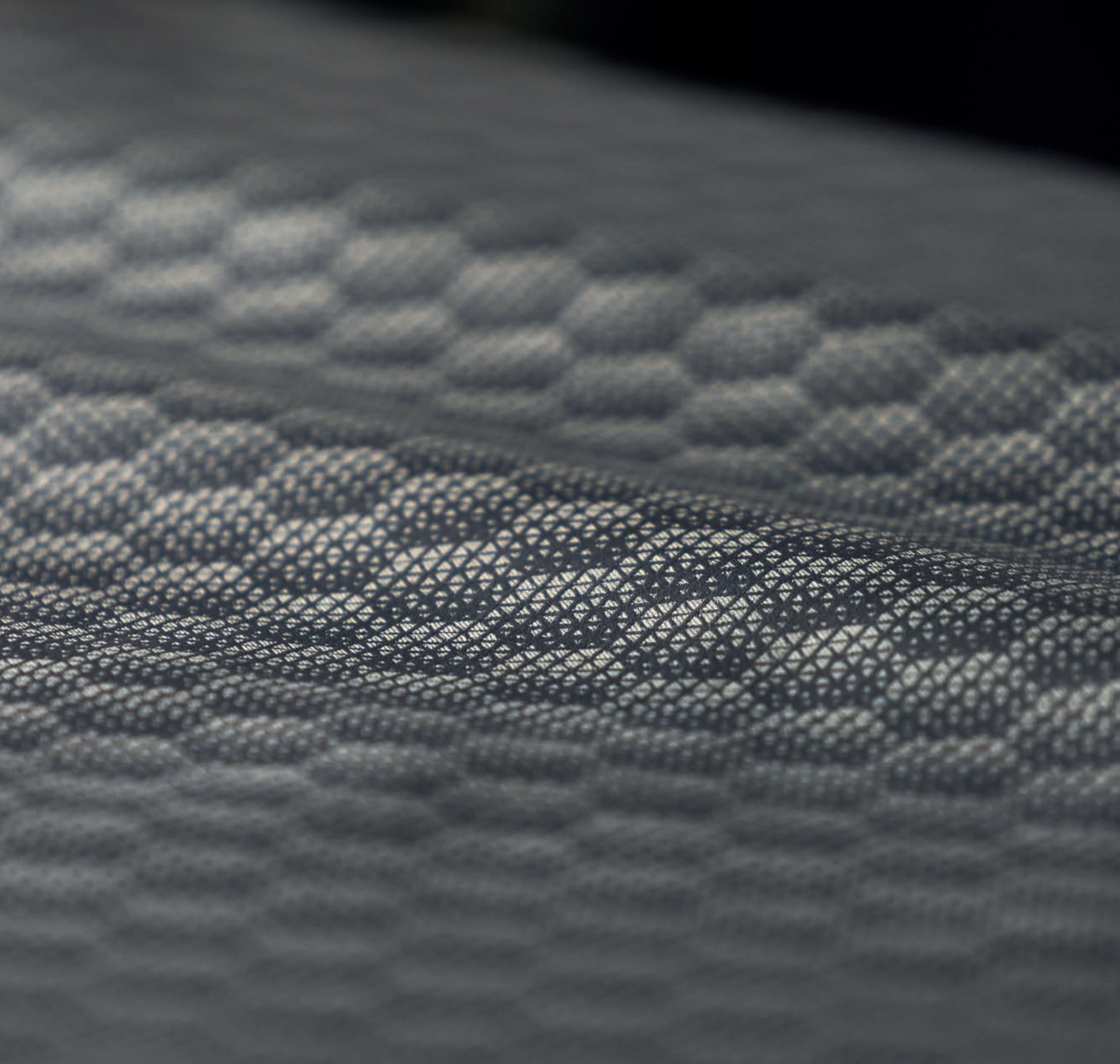












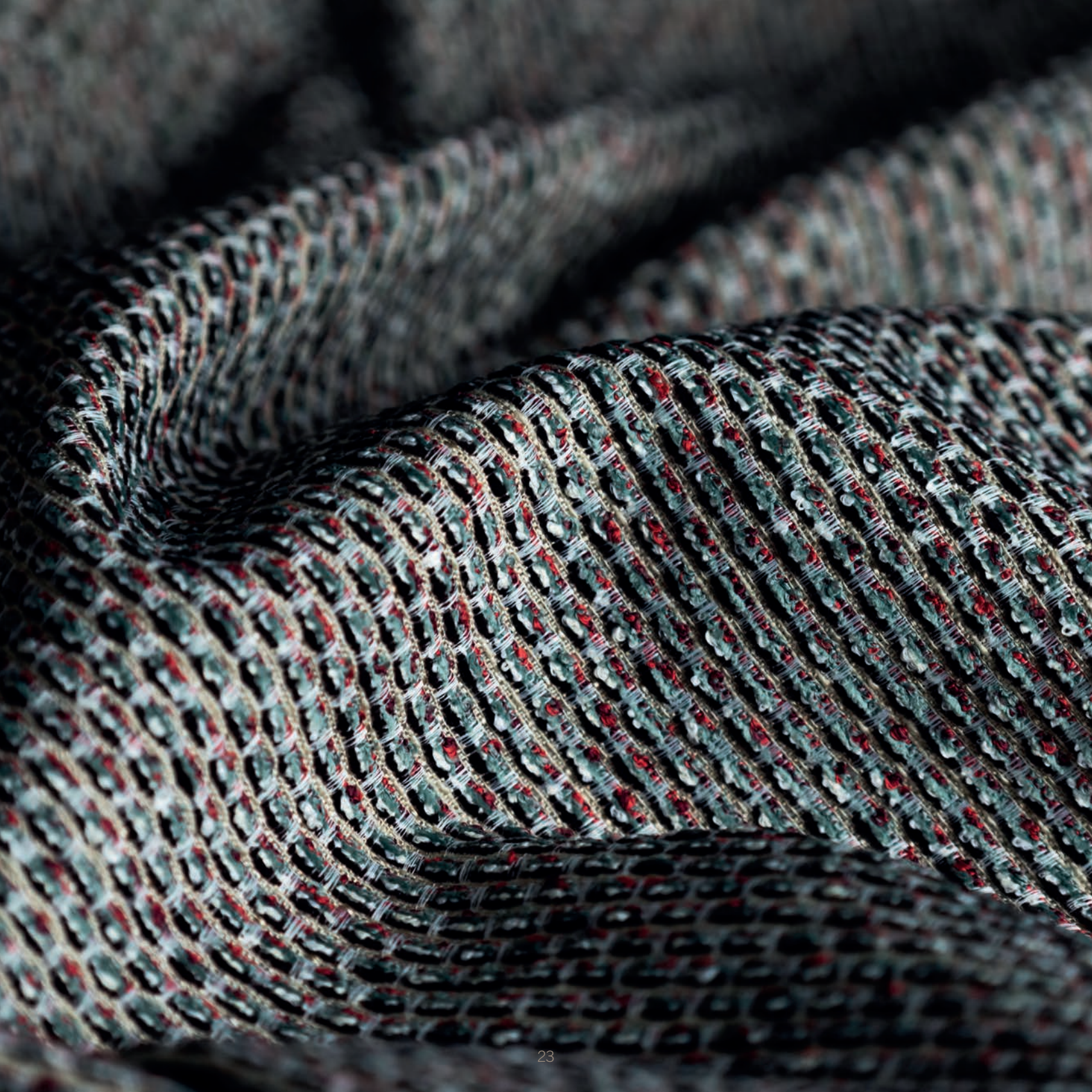


















K O H R E R
ITALY

The FOREST NETWORK



ATHABASKA



Pag. 06-07

ATHABASKA

Inspiration: powders, metals, sparks in ancient fires and forest rituals

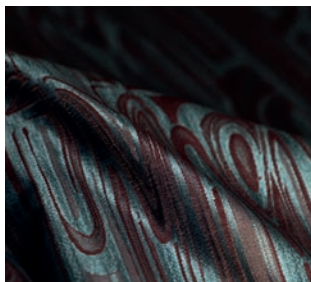
Composition: silk-and-cotton lampas jacquard

Features: bright and vibrant look

Use: duvet covers, sheets, drapes, accessories



FJORD



Pag. 08-09

FJORD

Inspiration: fjords and sea currents, vortices and whirlpools

Composition: silk-woven lampas jacquard

Features: iridescent, elegant and contemporary pattern

Use: bedding, accessories



PINE LIGHT



Pag. 10-11

PINE LIGHT

Inspiration: resins on the surface of pine cones

Composition: pure cotton lampas jacquard

Features: geometric pattern

Use: duvet covers, accessories



DENDRON



Pag. 12-13

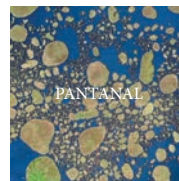
DENDRON

Inspiration: moss and lichens on tree barks and rocks

Composition: linen-cotton lampas jacquard

Features: cracked and irregular surface, three-dimensional effects

Use: accessories, bedspreads, cushions



PANTANAL



Pag. 14-15

PANTANAL

Inspiration: the largest flood plain in the world located in South America

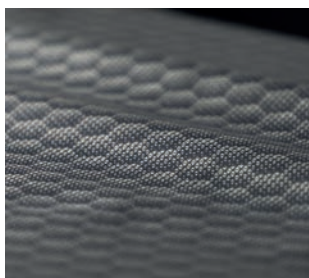
Composition: pure cotton pique

Features: matelassé lightweight structure, three-dimensional and contemporary look

Use: accessories, bedspreads, cushions



PHYLLOS



Pag. 16-17

PHYLLOS

Inspiration: subtle veins of leaves and chlorophyll biosynthesis

Composition: pure cotton double-colored jacquard

Features: reversible fabric

Use: sheets, bedspreads



UMBRA



Pag. 22-23

UMBRA

Inspiration: shadows and lights in the forests

Composition: cotton enhanced by chenille yarns in different colors

Features: reversible, vibrant and glittery texture, three-dimensionality effect, soft, and iridescent look

Use: accessories, cushions



TETHYS



Pag. 18-19

TETHYS

Inspiration: the primordial ocean

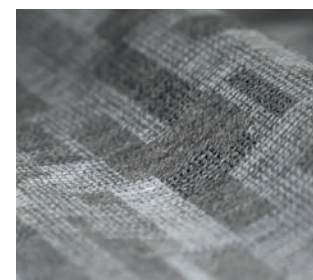
Composition: linen mélange

Features: reversible fabric, light structure, vibrant appearance

Use: curtains



SEQUOIA



Pag. 24-25

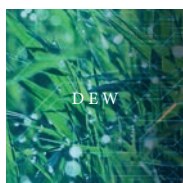
SEQUOIA

Inspiration: sequoias giant trees

Composition: cotton and wool

Features: robust and structured fabric, contemporary patterns, pixelated look

Use: accessories



DEW



Pag. 20-21

DEW

Inspiration: precious geometric droplets

Composition: pure cotton

Features: reversible fabric, lozenge pattern

Use: duvet covers, accessories

K O H R O
ITALY

marketing@kohro.it
phone: +39 035 741845

www.kohro.it

 @kohroitaly

 @kohroitaly

 WeChat

