

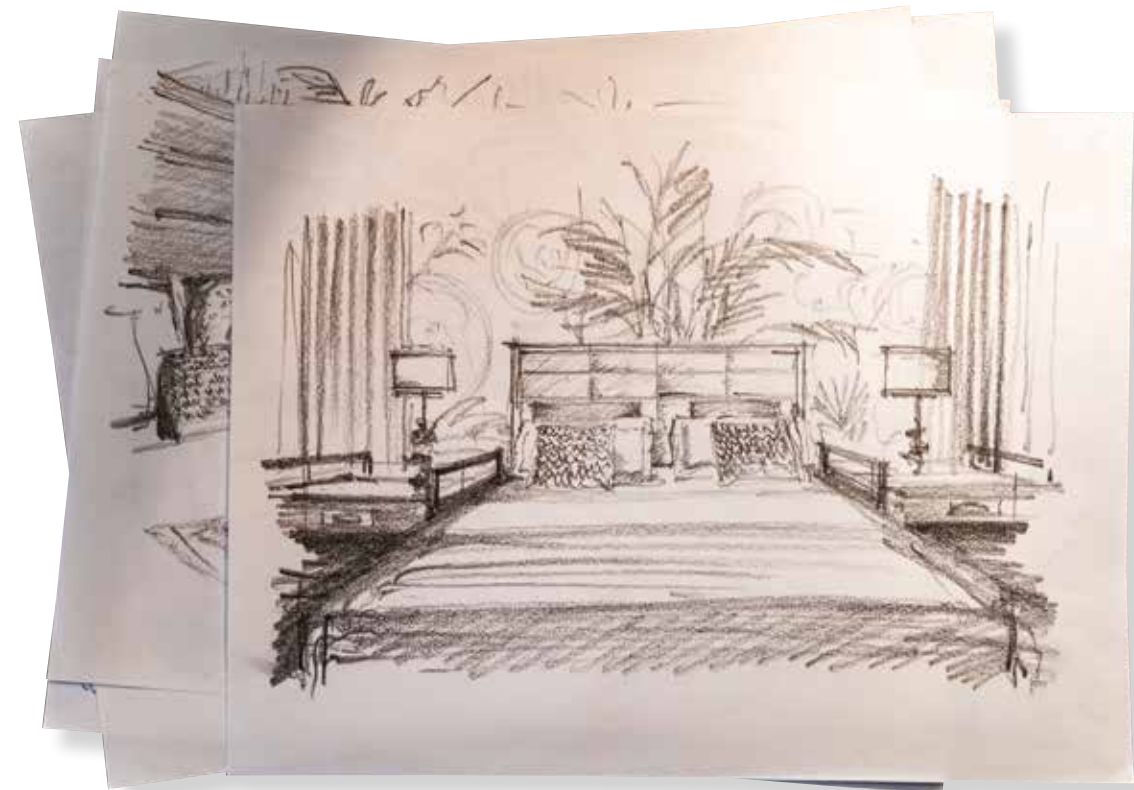


*missinglinks*

K O H R O

ITALY

K  H R   
ITALY



## *missinglinks*

Like clear thoughts coming to mind and linking memories together, or carving new paths for future stories, the six items in the new **MISSING LINKS** capsule inspire interesting combinations with other fabrics in the collection and allow for new possibilities, inviting novel elegant ideas.

**MISSING LINKS** enriches the collection with elements that become the binding force among the other existing items, a testament to cross-creativity that opens up to different areas for inspiration.

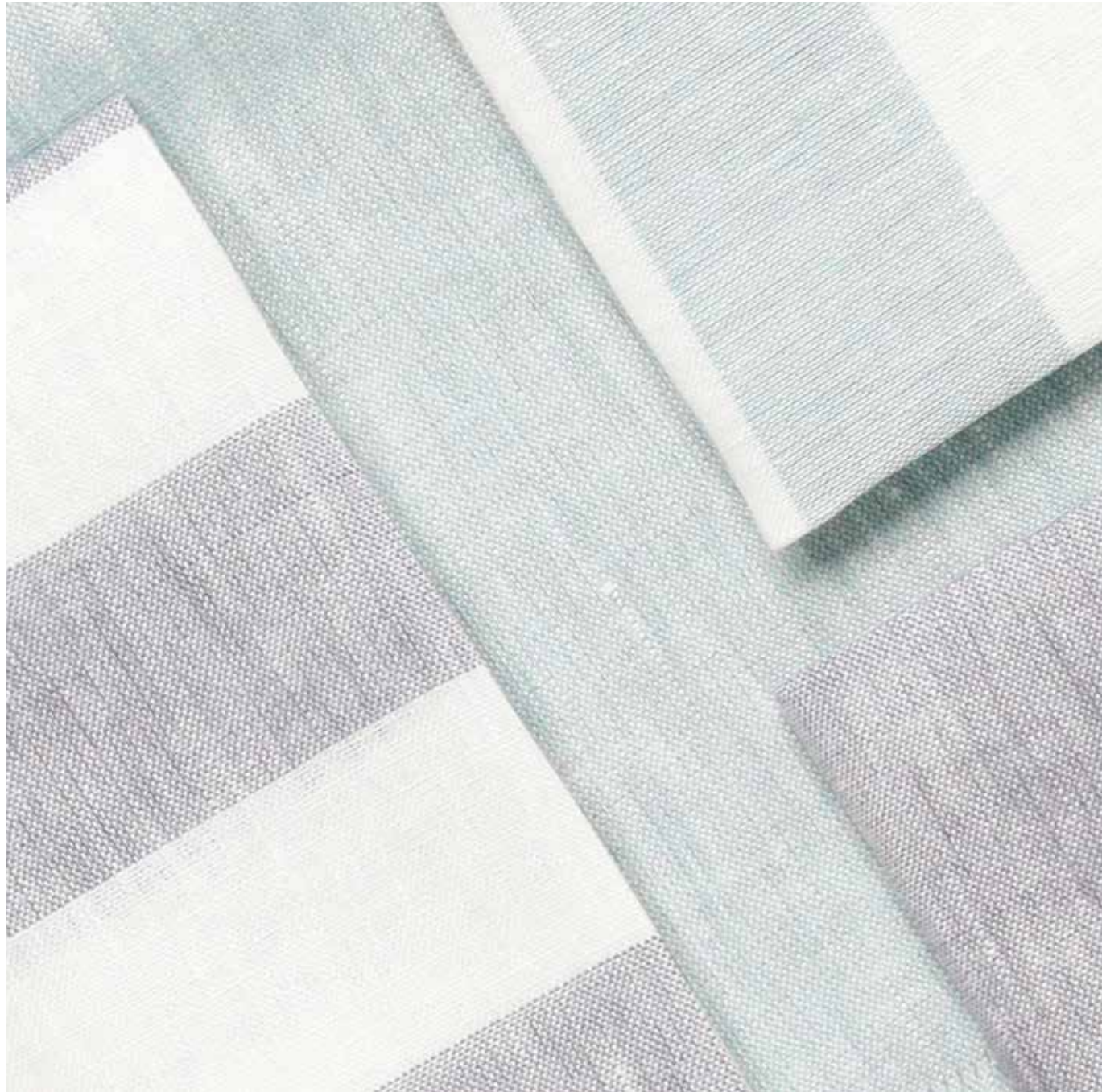
The results are double-width fabrics in different fibers, weights and structures, for upholstery or curtains, for bed sets and accessories, created for residential or hospitality applications, where elegance prevails. Heralds of unpretentiousness, ready to step up when combined with other fabrics.

**MISSING LINKS**, meditative reflections that trigger a chain reaction of lively desires.



BE INSPIRED





BINDING FORCE

CLEAR THOUGHTS











I N N E R T I M E



## The Grand Design | SARASVATI

**SARASVATI**, the Goddess of heavenly waters, is the inspiration behind this theme in **The Grand Design** collection. An Arcadian and imaginative place between sky and water, almost a terrestrial transposition of the Milky Way, Sarasvati portrays heavenly plants, birds, and flowers that flow in a 20-meter-long fabric composition.

In the eyes of the beholder, this panoptic becomes a suspended place for musing and getting reacquainted with one's inner time. A magical realism obtained by skilfully combining pictorial and digital art.

In **SARASVATI**, the evocative dialog and visual echo between Heaven and Earth, water and riverbanks, are rendered in two color variations: SARGASSOS, where the watery tones of the abysses and the sacred dimension of water prevail; BRONZE, with the naturalness of Mother Earth.





MAGICAL REALISM





**Pag. 8-9**  
**Tessuti/Fabrics:** Canotier/Teatime

**Federa a sacchetto/Pillowcase:** Canotier-Gold/Borders: Teatime-Gold  
**Cuscino con coda di topo/Cushion with piping:** Monsieur-Dune  
**Cuscino con coda di topo/Cushion with piping:** Monsieur-Tiger



**Pag. 10-11**  
**Tessuto per Parete/Fabric Wallcovering:** The Grand Design, Sarasvati-Bronze

**TURPAN 180 Banquette:** Pat-Sand  
**Set letto/Bedding Set:**  
**Federe 4 Volant /Pillows with 4 Borders:** Teatime-Ivory/Borders: Canotier-Gold  
**Federa a sacchetto /Pillowcases:** Canotier-Gold/Borders: Teatime-Gold  
**Copripiumino/Duvet Cover:** Canotier-Gold  
**Copriletto/Bedspread:** Otium-Gesso/Border: Pat-Sand  
**Cuscini con coda di topo/Cushions with piping:** Monsieur-Dune  
**Tende/Curtains:** Ponentino-Soap



**Pag. 12-13**  
**Tessuti/Fabrics:** Monsieur

**Federa a sacchetto/Pillowcases:** Canotier-Gold/Borders: Teatime-Gold  
**Copripiumino/Duvet Cover:** Canotier-Gold  
**Cuscini con coda di topo/Cushions with piping:** Monsieur-Dune  
**Cuscini con coda di topo/Cushions with piping:** Monsieur-Tiger



**Pag. 14-15**  
**Cuscino con coda di topo/Cushions with piping:** Monsieur-Dune

**DANCALIA Poltrona in Metallo/Metal Armchair:** Pat-Green Frost  
**Cuscini con coda di topo/Cushions with piping:** Monsieur-Mint  
**Tende/Curtains (on the left):** Farniente-Bisonte  
**Tende/Curtains (on the right):** Ponentino-Soap



**Pag. 16-17**  
**Tessuto per Parete/Fabric Wallcovering:** The Grand Design, Sarasvati-Bronze

**DANCALIA Poltrona in Metallo/Metal Armchair:** Pat-Green Frost  
**Cuscini con coda di topo/Cushions with piping:** Monsieur-Mint  
**Tessuto/Fabric:** Monsieur-Emerald



**Pag. 20-21**  
**Tessuto per Parete/Fabric Wallcovering:** The Grand Design, Sarasvati-Bronze

K O H R O

ITALY

[www.kohro.it](http://www.kohro.it)



@kohroitaly



@kohroitaly



WeChat